

Seeley Hills CLASSIC

January 29, 2022
42km & 22km Races
Seeley, WI



slumberland
BIRKIE
Ski. Run. Bike. Live!



PIONEER
= MIDWEST =

Hosted by the American Birkebeiner Ski Foundation
Title Sponsor—Pioneer Midwest

BE A PART OF THE 32 YEAR TRADITION!

The Seeley Hills Classic, started in 1992, is the second-largest annual classic cross-country ski event on the Birkebeiner Trail. The 42K race is an American Birkebeiner qualifying race.

Steeped in history and local ties, the race has served as a major fundraiser for the Seeley Ski Club, allowing it to promote skiing in a number of ways. The club was responsible for lighting the Birkie Trail at the Highway 00 area, and developed 15K Sawyer County Ski Trail in the Seeley area, which it maintains and grooms. Today, with the help of the American Birkebeiner Ski Foundation, the Seeley Hills Classic legacy will continue to keep skiing strong in the Seeley area.



REGISTRATION AND RACE CHANGES

<https://runsignup.com/Race/WI/Hayward/SeeleyHillsClassicBirkie>

Participants must be 15 years of age or older on race day to compete in the 42K event. Participants must be 10 years of age or older on race day to compete in the 22k event. No in-person registration, please register online before arriving.

Race changes may be made until 7:00pm Friday, January 28.

To change your race event/technique:

- Log in to your RunSignUp Profile [HERE](#)
- Scroll down to your event and click on "Manage Registration"
- Click on "Transfer Event" (along both top and bottom menus).
- Then select which new race you want to transfer to and complete new registration. You will be charged any differences and/or associated fees in the final cart.

Please email registration@birkie.com with registration questions.

PARTICIPANT SWAG AND BIB



VENUE AND PARKING

All races will start and finish at the Hwy OO Trailhead in the Kortelopet Stadium in Seeley, WI.

Parking is available at OO in the north and south lots at the Samuel C. Johnson Family Outdoor Center. Please use the Key Log Crossing to access the Kortelopet Stadium from the north side and do not cross directly on the road. Porta-potties will be located in the parking lots and at the start/finish line.

RACE DAY SCHEDULE

Race Day Schedule		
Time	Action	Location
7:00 - 9:30 AM	Bib Pick-up	Samuel C. Johnson Family Outdoor Center
10:00 AM	42k Start	Kortelopet Stadium
10:05 AM	22k Start	Kortelopet Stadium
12:00 PM	Soup at Sawmill for registered participants	The Sawmill
2:00 PM	Awards Ceremony	The Sawmill
2:30 PM	Raffle Drawing	The Sawmill
3:00 PM	Final Finishers	Kortelopet Stadium
4:00 PM	End of Soup Service	The Sawmill
Thanks for a great day out on the trail!		

COURSE MAPS AND AID STATIONS

The 42K race will start at OO in the Kortelopet start area and make its way over Hwy OO on the Key Log Crossing. The course will go north on the Birkie Skate Trail, turn around at Fire Tower, and head south on the Birkie Classic Trail. The race will continue on at OO, heading south beyond Gravel Pit for 2K before skiing 180 degrees and heading north to OO and the finish in the Kortelopet stadium.

The 22K race is returning to its roots! From the Kortelopet stadium, the course will go south 11K, turn around, and head north to finish in the Kortelopet stadium.

Aid stations will be at Boedecker and Gravel Pit for the 42K race. The race will travel through each station twice. The 22K race will have an aid station at Gravel Pit. Aid stations will offer water, Nuun Endurance, and GU products. Consider going green and carrying your own hydration vessel!

BOEDECKER

Distance:
(42k race only)
5k
15k

Hours:
10:00 am - 12:30 pm

Amenities:
Water
Nuun
GU
GU Chews

GRAVEL PIT

Distance:
22k race: 9k and 13k
42k race: 29k and 33k

Hours:
10:30 am - 2:00 pm

Amenities:
Water
Nuun
GU
GU Chews

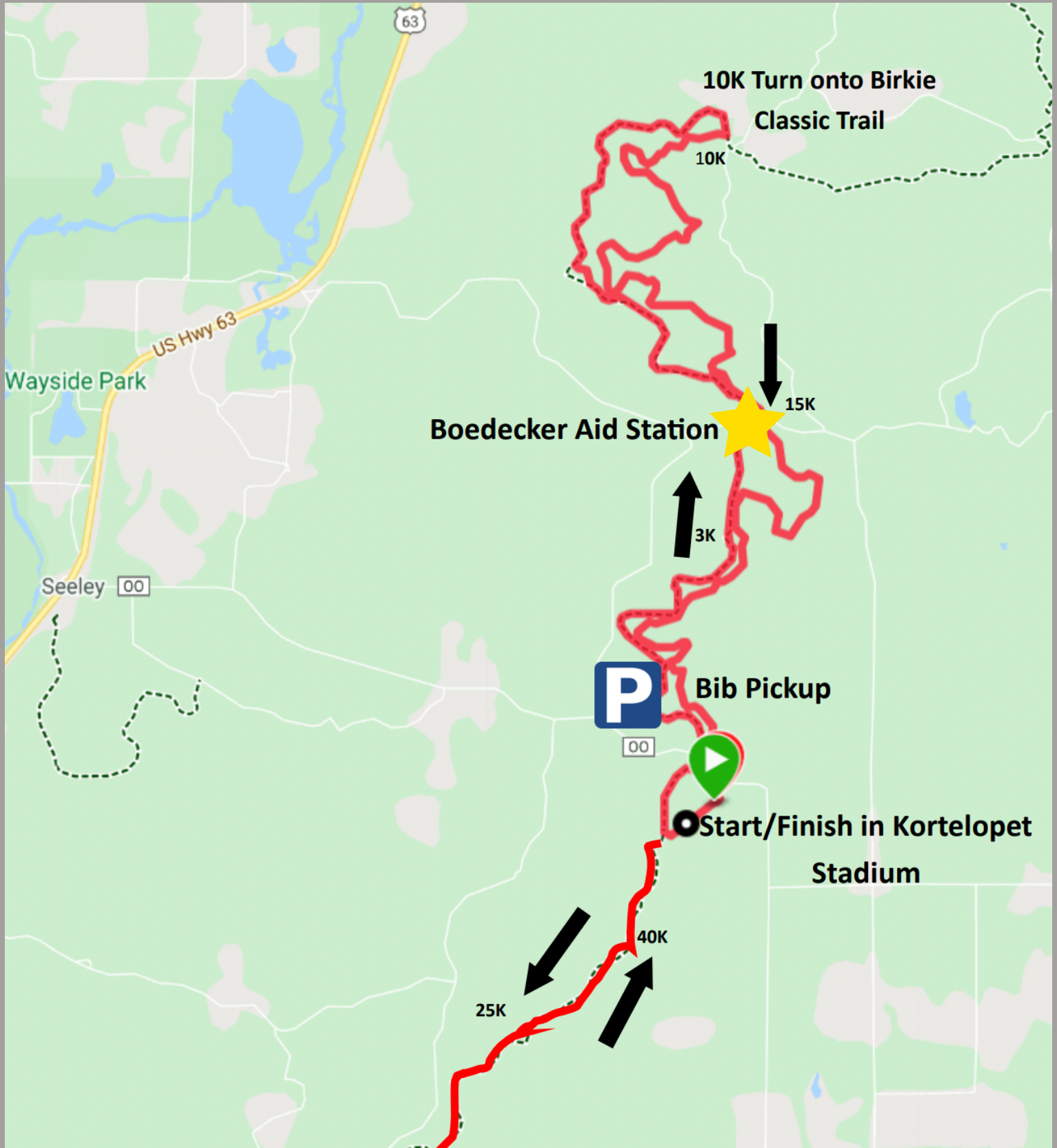
Participants are encouraged to bring and fill personal hydration vessels at each aid station.

WAX POLICY

The American Birkebeiner Ski Foundation encourages participants of all events on the Birkie Trail to use non-fluorinated waxes.

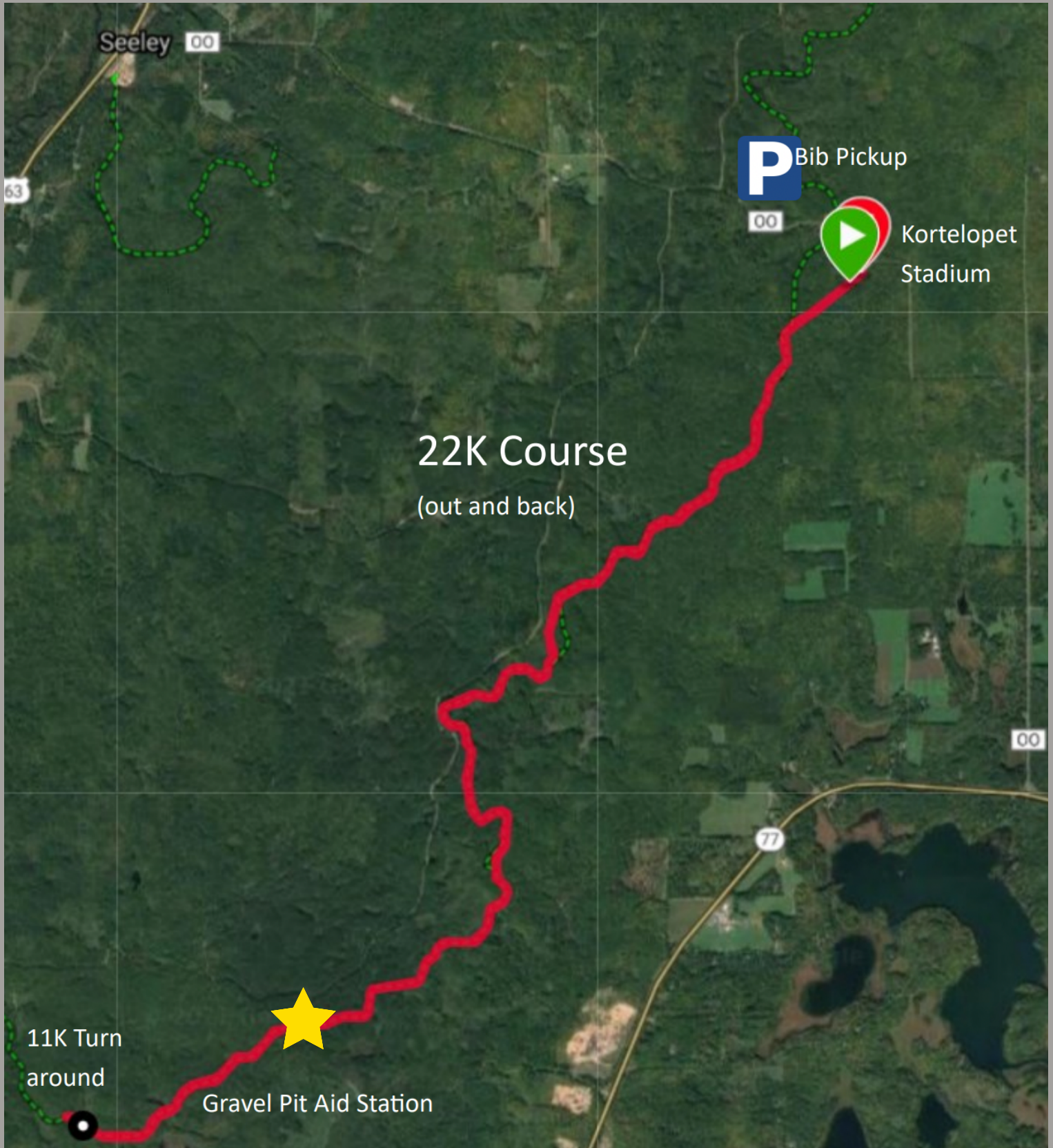
Seeley Hills CLASSIC

42K COURSE MAP



Seeley Hills CLASSIC

22K COURSE MAP



AWARDS AND RAFFLE PRIZES

Overall winners for the 42K and 22K races will receive an award, as well as the top two finishers in each age group category. Awards will be presented following the race at the Sawmill Saloon at 2 pm.

Penman Award for the top 3 male and female finishers in the 42K! Special thanks to Pioneer Midwest for supporting classic skiing and Gary Penman's hope that classic skiing live on and be celebrated.

1ST PLACE: \$1,000

2ND PLACE: \$250

3RD PLACE: \$125

Raffle prizes for this race include:

- 2 pairs of Hjul Skate Roller Skis with Binding
- 1 pair of Leki Race Poles
- 1 pair of Salomon RC10 Skin Skis
- 1 Waxless Touring Package provided by New Moon

*winners do not need to be present to win

AGE GROUP CATEGORIES

42K RACE

[29 YEARS AND UNDER]

[30 – 39 YEARS]

[40 – 49 YEARS]

[50 – 59 YEARS]

[60 – 69 YEARS]

[70 + YEARS]

22K RACE

[19 YEARS AND UNDER]

[20 – 29 YEARS]

[30 – 39 YEARS]

[40 – 49 YEARS]

[50 – 59 YEARS]

[60 – 69 YEARS]

[70 + YEARS]



COVID PRECAUTIONS

MASKS REQUIRED INDOORS

MASKS IN DROP-OUT VEHICLES

AID STATION SERVICE OUTSIDE

SOCIAL DISTANCING IN THE

SAMUEL C. JOHNSON FAMILY OUTDOOR CENTER

AND THE SAWMILL

PROUD SPONSORS

PIONEER
= MIDWEST =

